

**SPECIFICATIONS**

**1. MECHANICAL SPECIFICATIONS**

- TRAVEL OPTIONS (°): SEE TABLE
- TORQUE (Nm): 0.03 TO 0.05
- LIFE (CYCLES): >3,000,000
- WEIGHT (g): 26

**2. ELECTRICAL SPECIFICATIONS**

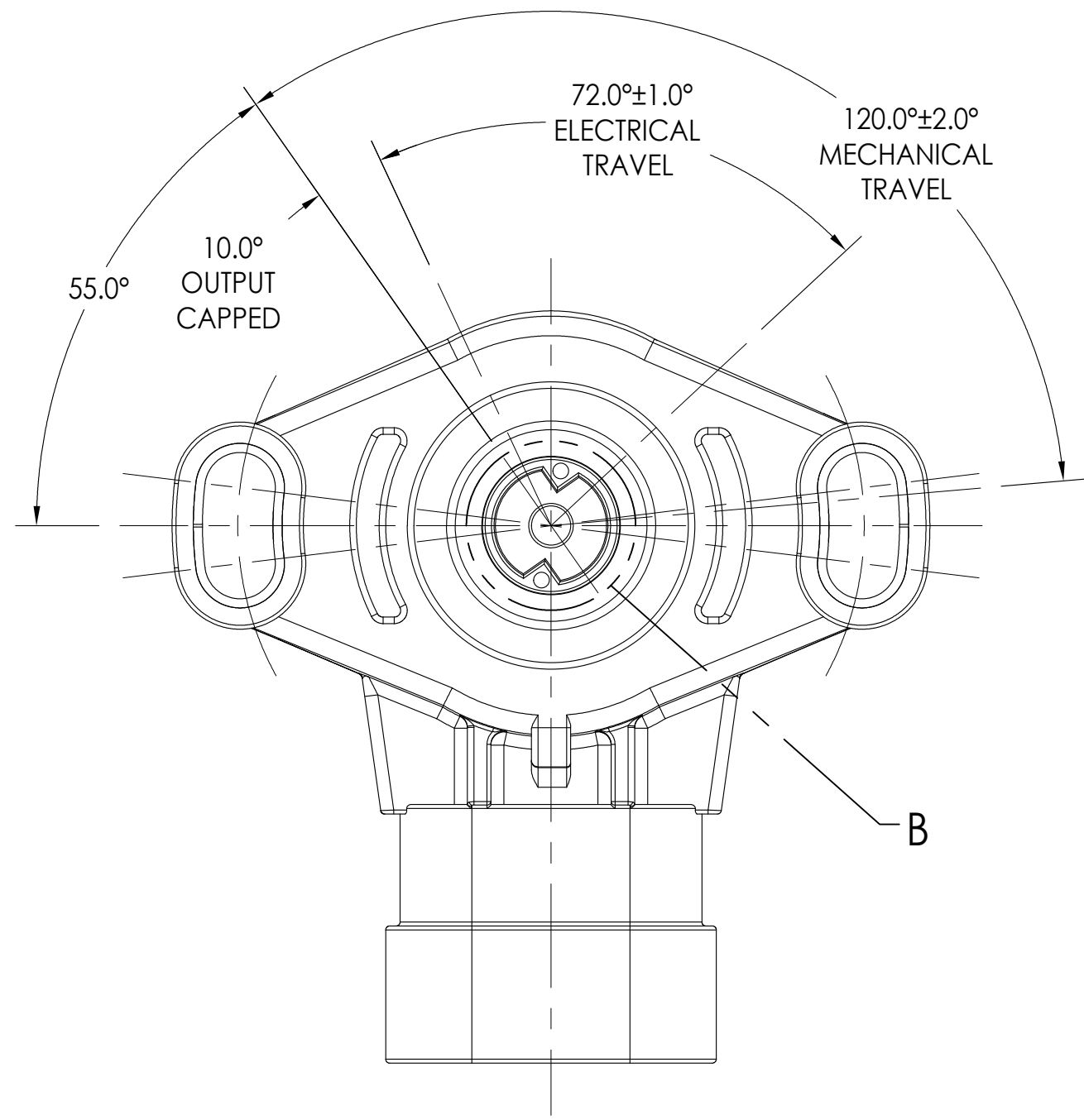
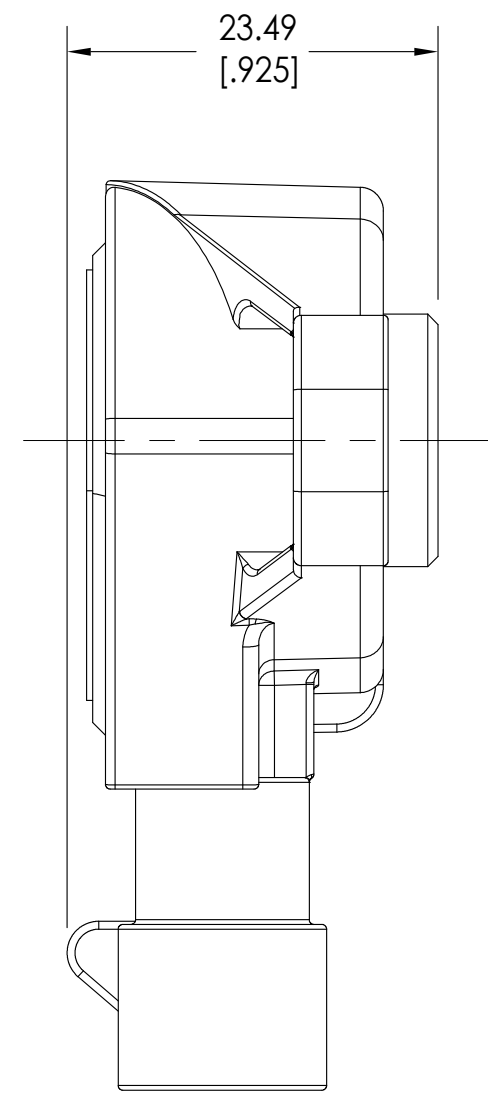
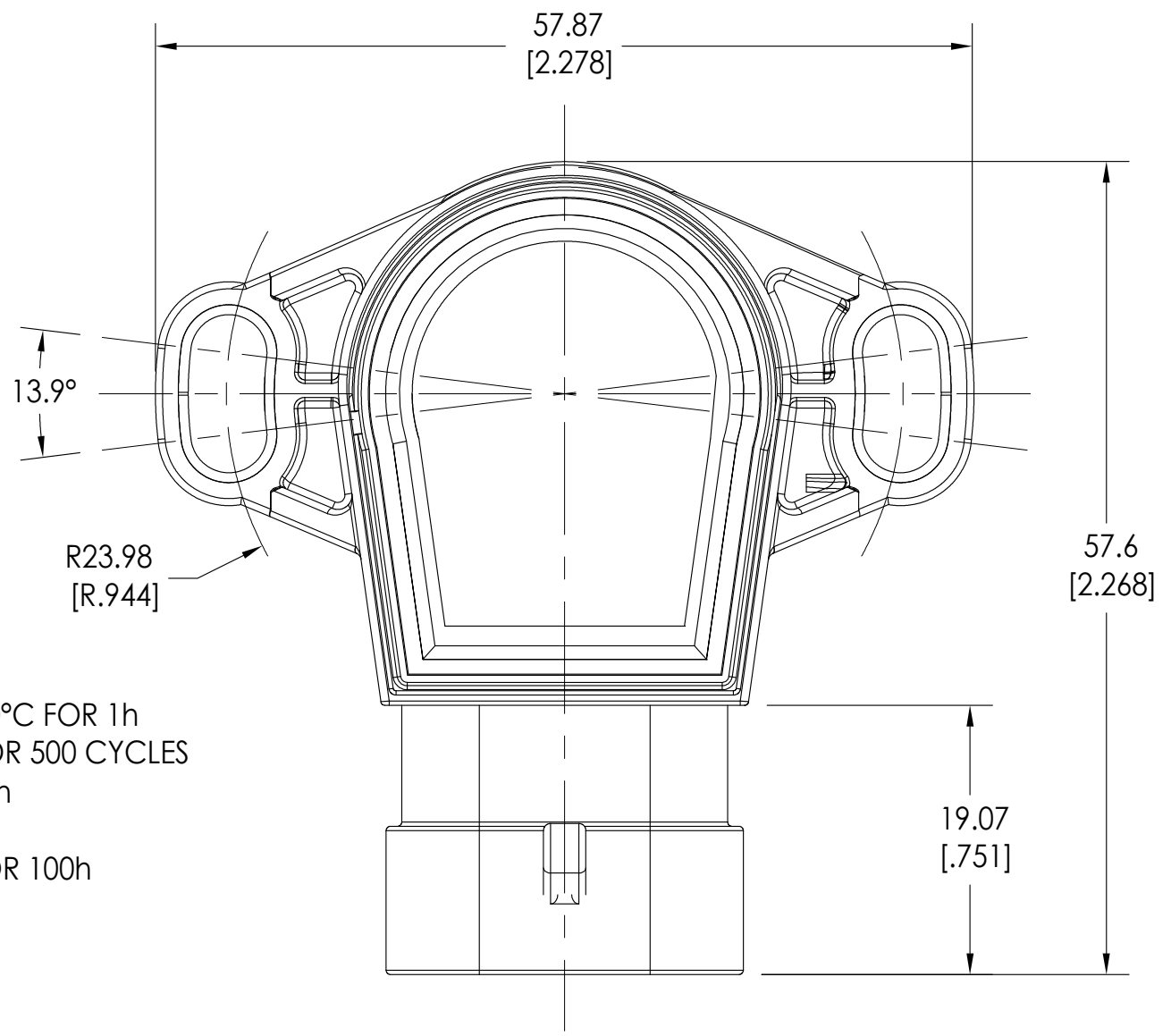
- SENSOR TYPE: RESISTIVE
- OUTPUT OPTIONS: SINGLE ANALOG
- OUTPUT RESISTANCE OPTIONS (KΩ): 5±20%
- WORKING VOLTAGE (VDC): 5
- MAXIMUM VOLTAGE (VDC): 16
- MAXIMUM CURRENT: (mA) 10
- LINEARITY: ±2%
- REPEATABILITY: ≤0.1%
- INSULATION RESISTANCE (MΩ): ≥10
- ELECTRICAL OUTPUT (VDC): SEE FIGURE 1

**3. ENVIRONMENTAL SPECIFICATIONS**

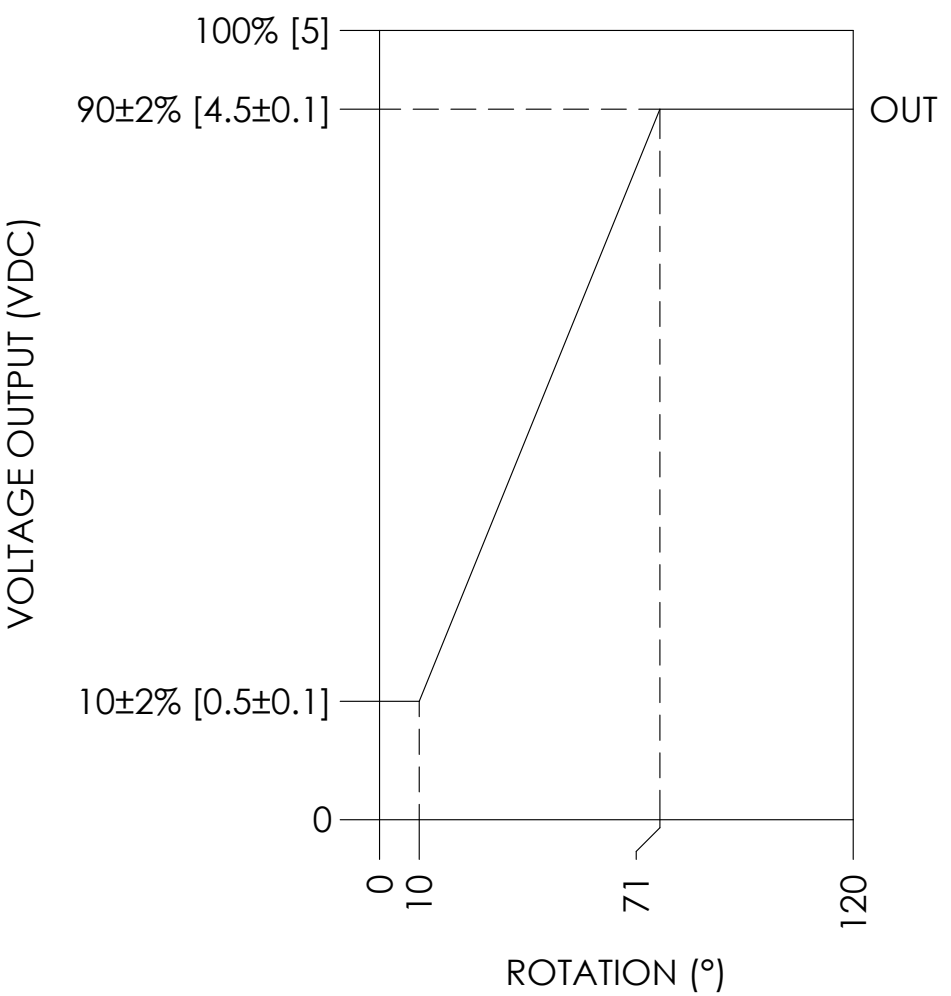
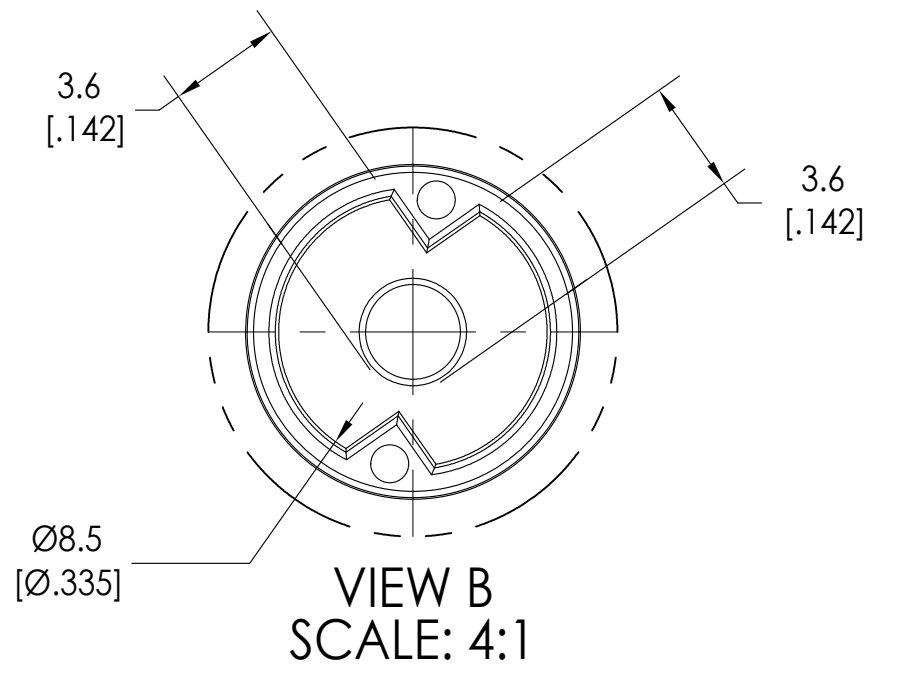
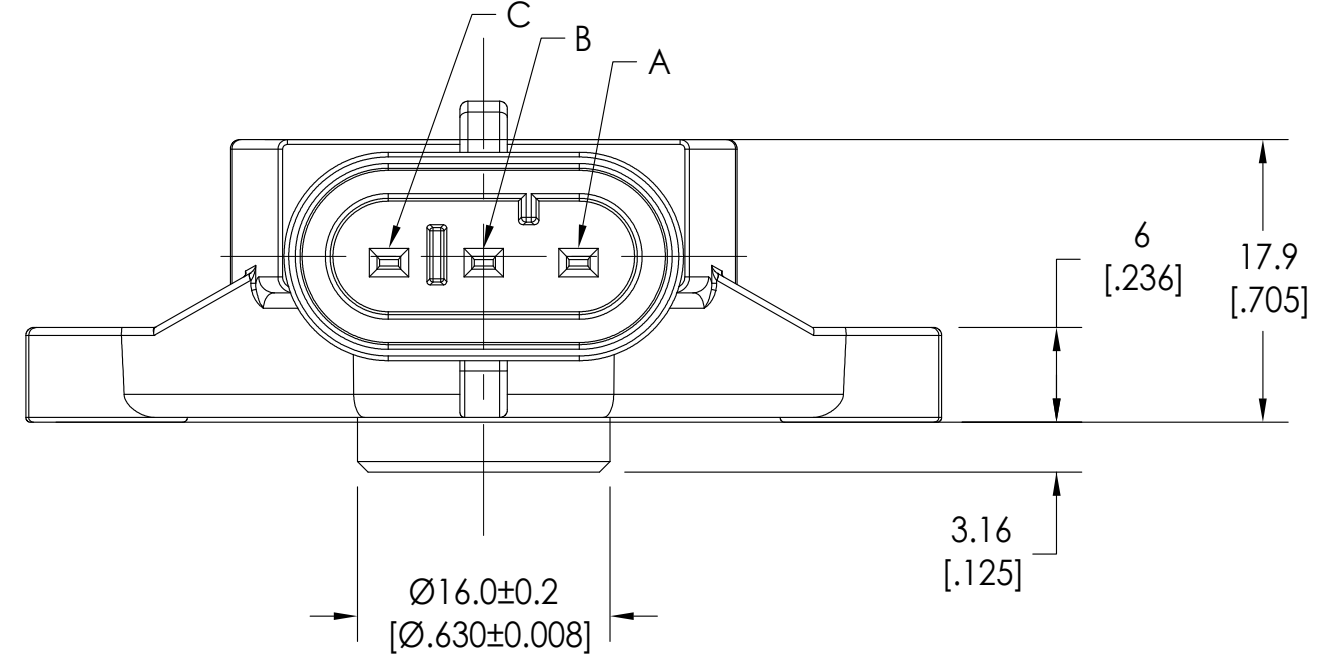
- PROTECTION CLASS: IP66
- WORKING TEMPERATURE (°C): -40 TO 125
- VIBRATION: 16-22 Grms RANDOM FOR 20h
- SHOCK RESISTANCE: 50g FOR 11ms
- TEMPERATURE CYCLING: -40°C FOR 1h TO 100°C FOR 1h TO -40°C FOR 1h FOR 500 CYCLES
- SALT SPRAY: 5% NEUTRAL SALT AT 25°C FOR 48h
- DUST: 45km/h AT 80°C FOR 25h
- HUMIDITY: 95% RELATIVE HUMIDITY AT 80 °C FOR 100h
- DROP: 3 TIMES FROM 1m

**NOTES**

1. ADDITIONAL RESISTANCE OPTIONS AVAILABLE UPON REQUEST

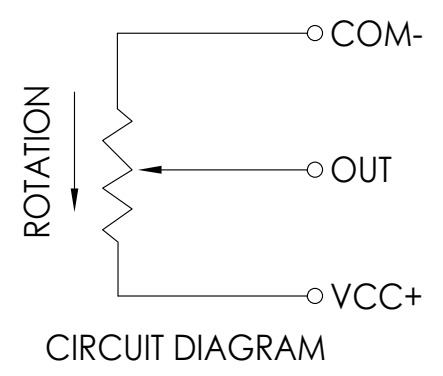


ELECTRICAL (°)	MECHANICAL (°)
71±1	120±1
100±1	120±1
71±1	>360
100±1	>360



MATING CONNECTORS  
 AMP SUPERSEAL 1.5 #282087  
 AMP SUPERSEAL 1.5 #284073  
 AMP SUPERSEAL 1.5 #1743427

PIN	FUNCTION
A	COM-
B	OUT
C	VCC+



UNITS IN millimeter [inch]

PART #  
5111

**SPECIFICATIONS**

**1. ENVIRONMENT SPECIFICATIONS**

- WORKING TEMPERATURE: -40°C TO 125°C
- STORAGE TEMPERATURE: -40°C TO 125°C
- VIBRATION TESTING
  - FREQUENCY: RANDOM
  - ACCELERATION SPECTRAL DENSITY: 16-22Grms
  - TIME: 20hrs
- PROTECTION CLASS: IP66

**2. ELECTRICAL SPECIFICATIONS**

- WORKING VOLTAGE: 5.0 - 16.0vdc
- TOTAL RESISTANCE APS: 5KΩ ±20%
- INSULATING RESISTANCE: ≥10MΩ
- ELECTRICAL ANGLE: 100°±1°
- LINEARITY: ±2%
- HYSTERESIS: <0.1%
- OUTPUT SMOOTHNESS: ≤0.5%
- REPEATABILITY: ≤0.1%
- WIPER WORKING CURRENT: ≤1μA
- MAXIMUM WIPER CURRENT: 10mA
- OUTPUT SIGNALS: SEE FIGURE 'A'

**3. MECHANICAL SPECIFICATIONS**

- TRAVEL: 120°±2°
- LIFE: 3,000,000 CYCLES
- WEIGHT: 26±1.5g

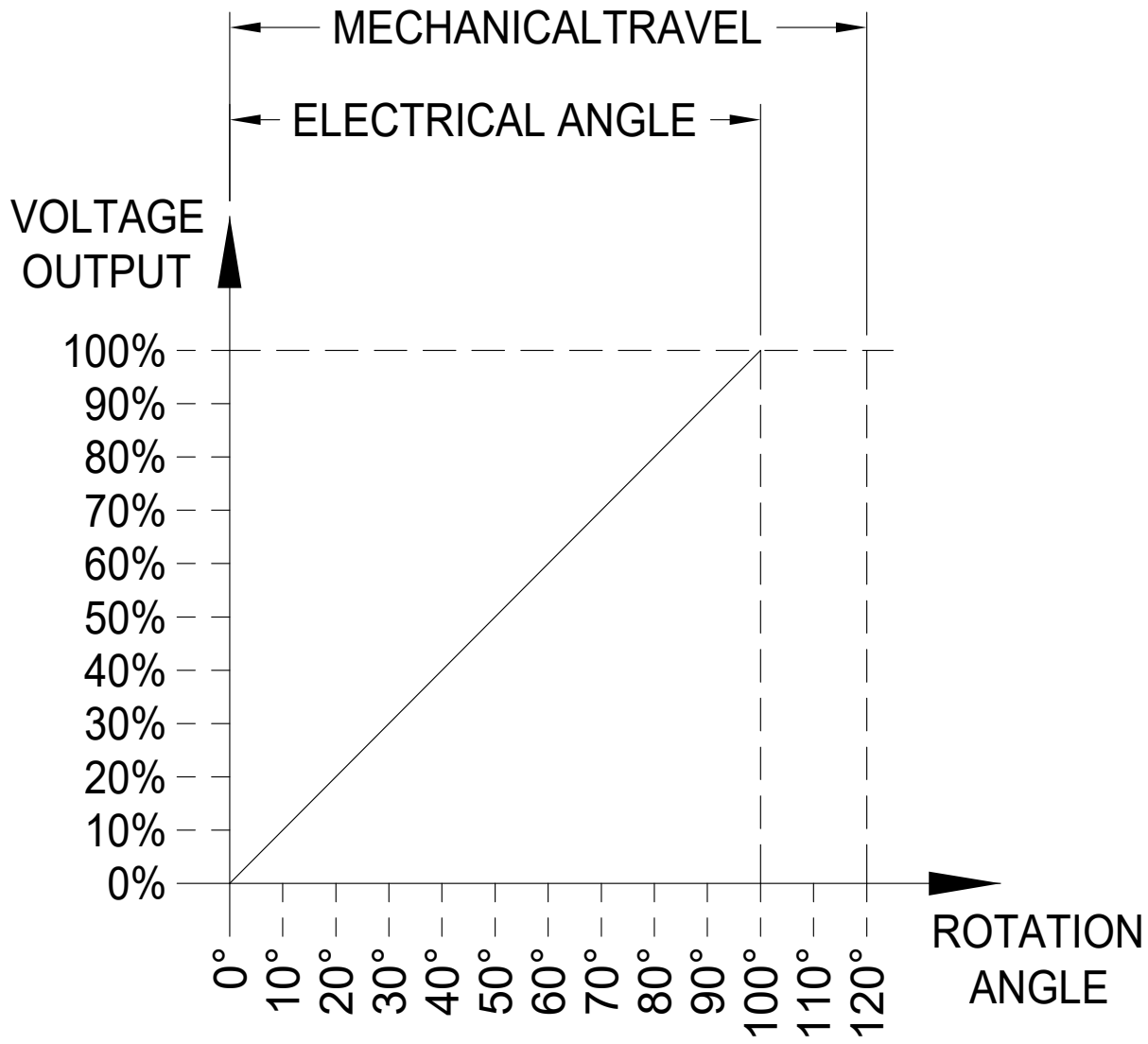
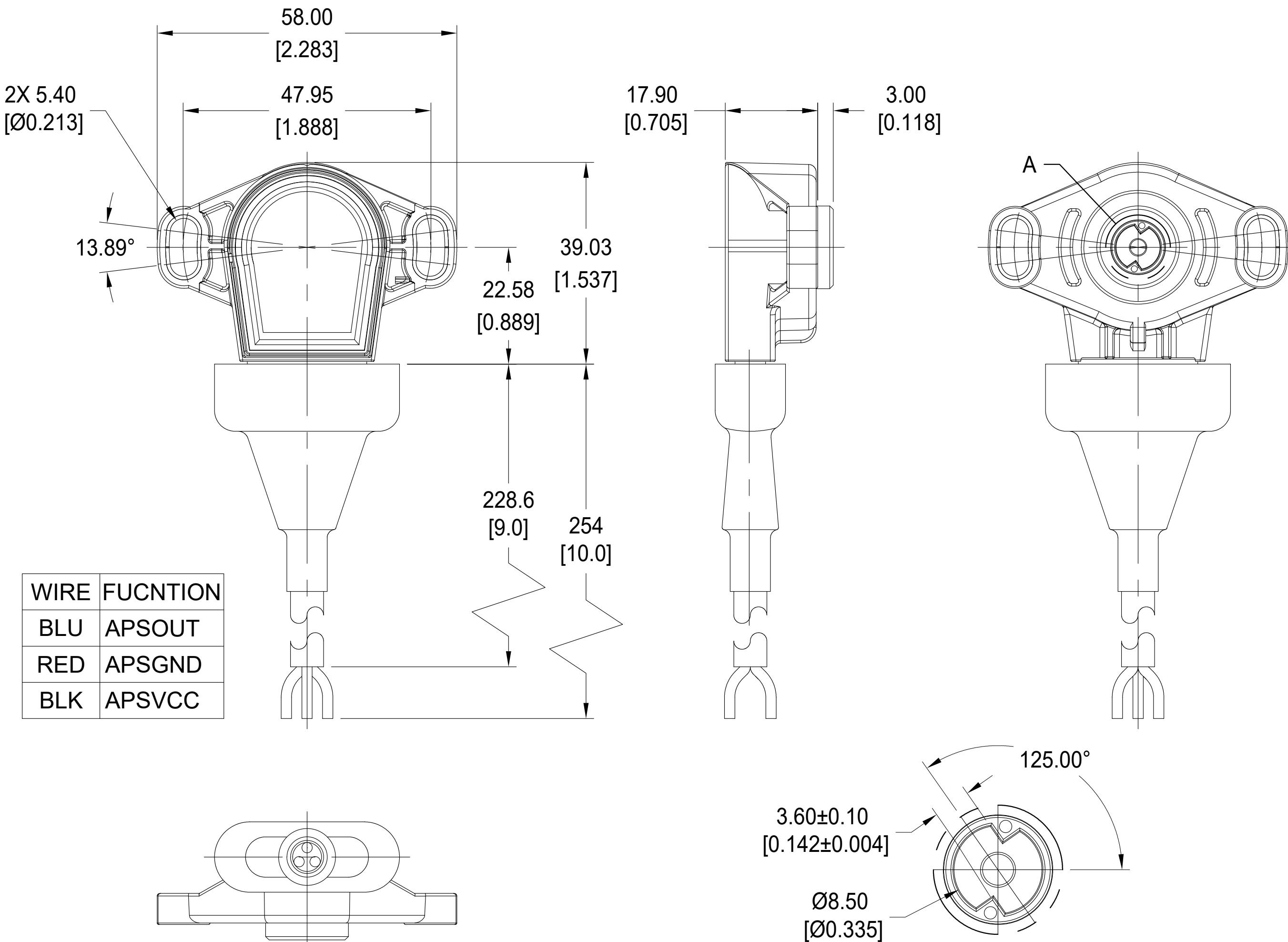
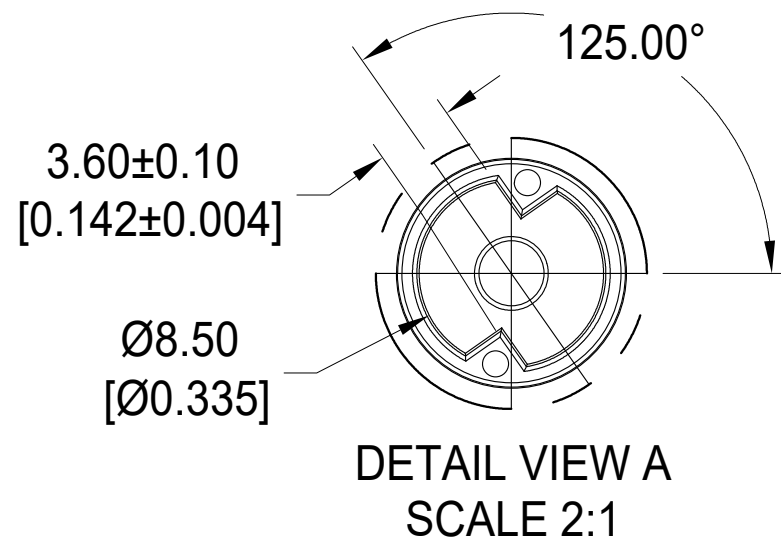


FIGURE A



WIRE	FUCNTION
BLU	APSOOUT
RED	APSGND
BLK	APSVCC



UNITS IN millimeter [inch]  
 PART #  
 5111-CW-100-5K-W0100