

Take Control with the Endurance Series Joystick

The Endurance Series sets the standard for multi-axis, ergonomic joysticks. Developed with an ergonomic-first approach, the Endurance Series joystick is specifically engineered for durability in demanding, high-use vehicle applications.

Maximum Operator Comfort and Efficiency

With an advanced ergonomic design that matches biomechanical motion and ultra-bright LEDs, the Endurance Series joystick is easy to operate in a wide-range of demanding vehicle applications. It is available in both left and right versions.

Fully Customizable, Modular Design

Each joystick's lighting and faceplate are fully customizable to meet your requirements. To increase equipment compatibility and speed up development time, the Endurance Series joystick can be customized with a wide variety of interchangeable, modular components that are easily serviced.

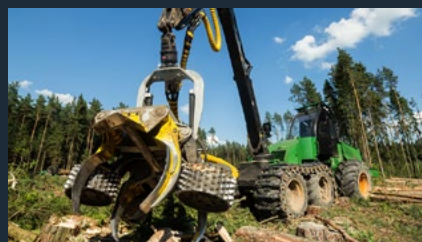
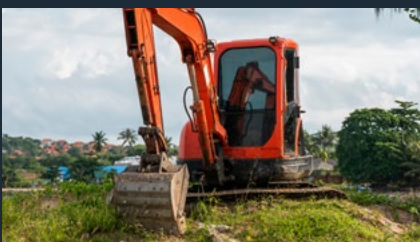


Rugged, Long-Lasting Performance

The fully sealed and impact-resistant Endurance Series is rated for -40°C (-40°F) to 85°C (185°F) operation. The joystick is designed to withstand even the most extreme cab conditions for up to 5 million cycles (20 million operations).



Applications



Take Control with the Endurance Series Joystick

Customizable button lighting and graphics including color, brightness, sequencing and function

Ergonomic dual-angle faceplate maximizes efficiency with up to 3 rows of controls

Fully customizable faceplate provides ultimate design flexibility

Configurable and modular control options to perform a wide variety of functions

Capacitive operator presence sensing, even with gloves on – no switches or paddles needed

High travel buttons provide positive tactile feedback to indicate activity

Ultra-bright LEDs provide maximum visibility in all conditions

Intuitive dual or single triggers provide easier control than buttons or rollers

Ergonomic hand rest supports natural hand position

Ergonomic handle shape matches natural hand position to reduce fatigue

Durable, impact-resistant enclosure sealed to IP69K

See Endurance Series Features and Benefits

Available with left and right facing handles

Sure Grip Controls is an ISO certified company specializing in custom control solutions for vehicles and equipment in agriculture, construction, forestry, transportation and industrial applications. Our joysticks, miniature thumb controls, and control electronics are meticulously designed, engineered, manufactured and quality-tested to meet manufacturer's specifications while delivering long-lasting, reliable performance. We work closely with hundreds of original equipment manufacturers around the world to develop innovative solutions to their challenges. Whether it's a few joysticks or thousands, our engineering, manufacturing and fulfillment teams are ready to produce your project. Our flexible manufacturing and distribution systems are designed to meet the needs of our global customers.

Contact us today to find out why there's nothing we can't handle.

suregripcontrols.com | 1-800-831-2278 | sales@suregripcontrols.com